

Excite

**DYN**AUDIO

Miles. Jimi.  
Wolfgang.  
Ludwig.  
Playing with  
the big boys  
has never  
been more  
fun: the  
**Excite X38.**



# The mother of all bass: **X38**

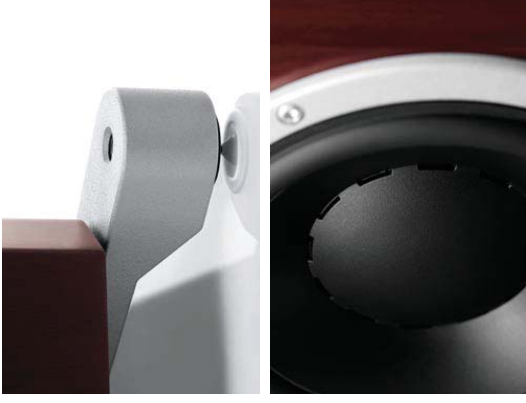
More sound volume, more detail, more high-end: The Excite X38 achieves a deep, powerful and vibrant sound quality, even in larger spaces.

The Excite flagship model X38 utilizes two 18cm diameter woofers featuring characteristic Dynaudio driver technologies, including: lightweight but rigid MSP cone membranes, extraordinarily large 75mm diameter aluminium voice coils with powerful center magnet systems, and high-strength die-cast aluminium frames.

That's how the X38 achieves its resounding bass, thrilling dynamics and incredible control. The midrange driver also utilizes MSP, thus ensuring a seamless integration with the woofers, while the tweeter's coated fabric dome guarantees the finest resolution and high frequency detail. With its meticulously selected crossover components and optimized dispersion characteristics, the X38 combines its energetic, dynamic presentation with a remarkably balanced, three-dimensional portrayal of the recording.

The extensively braced cabinet is available in a choice of fine natural wood veneer or satin lacquer finishes, while the removable cloth grille is discretely secured via concealed magnets. A notable feature is the integrated feet: depending on the flooring surface, the X38 can stand on four resonance-absorbing rubber feet or four height-adjustable spikes.

[www.dynaudio.com/X38](http://www.dynaudio.com/X38)



Mr. Scott,  
energize!

Who says  
you can't

fly in an

armchair: the

**Excite X34.**



# Transcend time and space: **X34**

Slim line design that fascinates with a distinguished presentation: The Excite X34 is an elegant, high-end, floor-standing loudspeaker, whose sheer sonic output and incredibly three-dimensional soundstage belies its modest dimensions.

The X34 is a particularly discreet loudspeaker, measuring less than 95cm tall and only 17 cm wide, but its dual MSP mid/woofers, coated soft dome tweeter and special dispersion character convey an unmistakably high-end sound quality. With its extremely lightweight aluminium voice coils, greater driver membrane radiating area, and larger enclosure volume than a compact speaker, it can produce a deep, powerful bass response even in spacious rooms. Precise fine-tuning of the crossover yields an optimized dispersion, which further enables an incredibly accurate, three-dimensional presentation of the recording. The X34 is also extremely amplifier-friendly due to its 8 Ohm impedance.

The exquisitely finished cabinet includes a cloth grille secured by concealed magnets, and features a particularly smart base construction: on hardwood floors, the X34 can stand on four resonance-absorbing feet, while four adjustable integrated spikes may be used to achieve a perfect foundation on carpeted surfaces.

[www.dynaudio.com/x34](http://www.dynaudio.com/x34)



Carnegie Hall.  
La Scala.  
Shelly's  
Manne-Hole.  
How on earth  
can a speaker  
this small  
transform your  
listening room  
into a sacred  
space? The  
**Excite X14.**



# Right on the spot: X14



Ultra-compact but undeniably high-end: The Excite X14 brings an extraordinary level of sophistication and refinement to the compact loudspeaker category.

The X14 is the most compact Excite model, yet delivers true high-end sound quality to any system by virtue of its long-excursion mid/woofer, refined soft dome tweeter and first-class crossover components. The exquisite sonic balance, underscored by an unbelievably deep, fast and perfectly controlled bass response is a rarity in this price class. A Dynaudio specialty plays a major role: extremely lightweight aluminium voice coils and exceptionally large, powerful magnet systems are utilized in the X14 tweeters and mid/woofers. The music signal reproduced is graced with incredible precision, dynamics and accuracy. Moreover, the X14 is easy to drive with a wide range of amplifiers, due to the amp-friendly 8 Ohm impedance.

The beautifully crafted cabinet is equally refined: exquisite natural wood or satin lacquer finishes enoble the rigid, solid enclosure while the minimal distance between tweeter and mid/woofer serves to improve timing and phase. The Dynaudio Stand 3X and Stand 6 speaker stands, SF1 speaker feet, and assorted wall mount brackets are perfect accessories available for optimizing placement of the X14.

[www.dynaudio.com/x14](http://www.dynaudio.com/x14)



We have you  
surrounded.

Drop your  
prejudices,  
raise your  
glass and  
melt right  
into the  
action: The  
**Excite**  
**X24 Center.**





# Easy to set up, even more easy to enjoy: **X24**

Captivating Excite sound quality in your home theater: The easy-to-set-up, compact X24 Center rounds out the Excite Series as the ideal solution for surround systems.

The X24 features dual mid/woofers flanking a fabric dome tweeter, while its 8 Ohm impedance renders it a perfect match with any AV receiver in a modern, high performance home theater. A seamless, enveloping sound and homogenous integration with the Excite main and surround loudspeakers is achieved via the shared MSP driver cones, soft dome tweeter diaphragms, lightweight aluminium voice coils and large magnet systems.

Even the dispersion character is a perfect fit with the Excite multi-channel system. Set-up is particularly simplified: the X24 is exceptionally compact, and features an integrated base/foot that allows upward angling for improved directivity. It can also be removed to facilitate installations where space is minimal, or supplemented by a Dynaudio wall mount bracket. The X24 cabinet features a magnetically-attached front grille and is available in the four standard Excite finishes to offer optimal aesthetic integration into any living space.

[www.dynaudio.com/x24center](http://www.dynaudio.com/x24center)



Technical Specifications		X38	X34	X14	X24 Center
<b>Sensitivity</b>		88 dB	86 dB	85 dB	85 dB
<b>IEC Long Term Power Handling</b>		>250 W	>200 W	>150 W	>150 W
<b>Impedance</b>		4 Ω	8 Ω	8 Ω	8 Ω
<b>Frequency Response</b>		34 Hz-23 kHz (± 3 dB)	37 Hz-23 kHz (± 3 dB)	50 Hz-23 kHz (± 3 dB)	55 Hz-23 kHz (± 3 dB)
<b>Weight</b>		23.0 kg	17.0 kg	6.5 kg	8.0 kg
<b>Dimensions without feet (W x H x D)</b>		205 x 1049 x 310 mm	170 x 929 x 270 mm	170 x 285 x 255 mm	500 x 145 x 210 mm
		8.1 x 41.3 x 12.2 inch	6.7 x 36.6 x 10.6 inch	6.7 x 11.2 x 10 inch	19.7 x 5.7 x 8.3 inch
		235 x 1079 x 330 mm	200 x 959 x 290 mm	Stand 3X/Stand 6 optional	500 x 182 x 210 mm
<b>Dimensions with feet (W x H x D)</b>		9.3 x 42.5 x 13 inch	7.9 x 37.8 x 11.4 inch		19.8 x 7.7 x 8.3 inch

#### Finishes



(1) Satin White Lacquer (2) Sain Black Lacquer (3) Walnut (4) Rosewood

#### Note:

(1) with grey front grille, (2) (3) (4) with black front grille.  
White, grey and black front grilles are available as accessories.



All there is.

**DYNAUDIO**

Dynaudio A/S, 8660 Skanderborg, Denmark

Sales & Marketing: Dynaudio International GmbH, Ohepark 2, 21224 Rosengarten, Germany, Phone: +49 4108 - 41 80 - 0

[www.dynaudio.com](http://www.dynaudio.com)